

CHENBRO



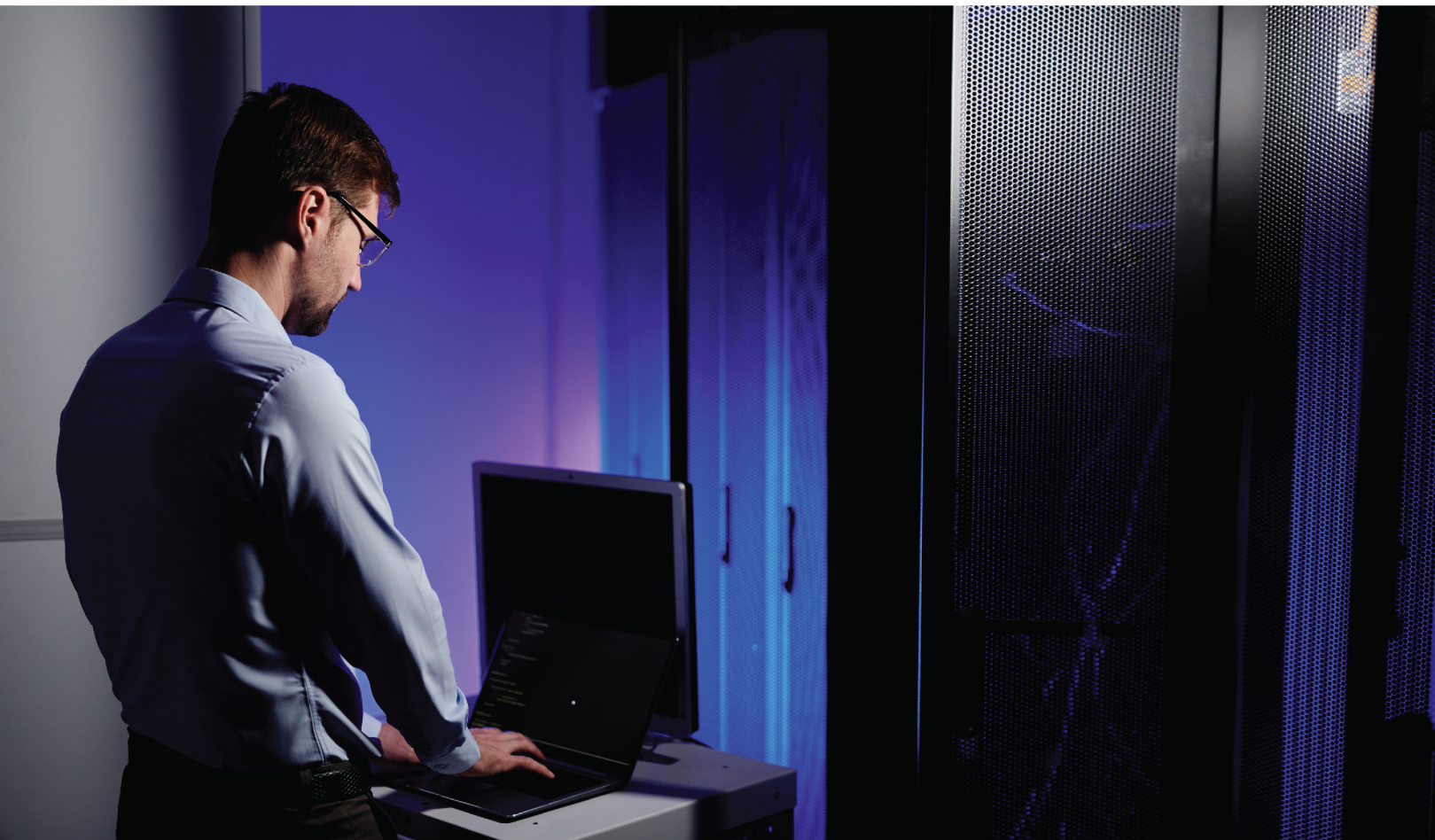
**SERVER
SOLUTIONS**

CHENBRO SOLUTIONS

With decades of experience providing server chassis for the world's leading IT companies, Chenbro has a deep understanding of customer needs and computing technology.

Our solutions provide:

- Sturdy, well-finished build
- Easy customization for both specs & appearance
- Long life cycles- no EOL for models still in use
- Reliable ETAs & service
- Certification
- Design support up to the L6 barebones level
- Factory in Taiwan



BAREBONES (L6) SERVERS

Surveillance, Business Operations, and More

Recommended models: The 1U RB151 and 2U RB251 are barebones (L6) servers, featuring Intel's T-shaped Server Board M50CYP2SBSTD, and capable of supporting unique, niche applications that are compute-intensive.

- Dual Intel Xeon Scalable Gen 3 CPUs
- Up to 8 PCIe expansion cards
- Up to 12 3.5" drive bays
- Up to 24 2.5" drive bays
- Superlative thermal performance



RB151



RB251



STORAGE SOLUTIONS

Our datacenter solutions leverage patented structural technology that cuts maintenance costs and boosts thermal performance.

Recommended models: RM25324 (2U) and RM43736 (4U).

- High-density- 24 3.5" drives in a 2U, or 36 in a 4U.
- Unique side-access design allows faster maintenance while avoiding the heat and noise behind the rack.
- Unique structure keeps drives cool.
- Modular design allows fans to be swapped out individually.
- Modularity also allows easy addition of NVMe.



RM25324



RM43736



RM252



RM352

INDUSTRIAL EDGE SERVERS

Get ample computing muscle in a compact, sturdy enclosure for industrial and telco applications with Chenbro's short-depth chassis. These chassis are ideal for graphics, simulation, machine learning, and other applications requiring parallel processing and multithreading.

Recommended models: RM252 (2U), RM352 (3U)

- 18" short-depth chassis with 2U and 3U options
- Allows for dual CPUs
- Support for SSI EEB motherboards
- Up to 4 double-width GPUs (in 3U chassis)
- Front or rear I/O



EDGE STORAGE

When storage is needed on the edge in addition to compute, deploy our short-depth 2U JBOD chassis, DS25224, which can expand on the RM252 or RM352 platforms.

- Pack in up to 24 SSDs in an 18" deep server.
- Deploy with our 2U or 3U industrial edge chassis.



DS25224

LAB & OFFICE HIGH-PERFORMANCE COMPUTING

Analysis, Simulations, Graphics

Chenbro created the first tower chassis, and our towers remain the perfect foundation for office or lab-based servers that require parallel processing and multithreading.

Possible applications include AI, graphics, simulation, analysis, and machine learning.

Recommended model: SR113

- Capacity for 5 double-width GPUs and dual CPUs
- Office & lab-friendly design, also rackable as a 4U chassis
- 8 bays for 3.5" HDDs or 2.5" SDDs



SR113

PRODUCT SPECIFICATIONS

Barebones

Model	CPU	Motherboard	Height	Depth	How Swap Drive Bays (may require optional cages)
RB146	Intel® Xeon® E-2300 10th Gen Intel® Pentium®	ASRock Rack® Server Board E3C252D4U	1U	22"	3.5" SAS/SATA: 4 drives
RB151	Intel Xeon Scalable 3 rd Gen	Intel® Server Board M50CYP2SBSTD	1U	31"	2.5" NVMe: 12 drives (up to 10 with SAS/SATA) OR 2.5" SAS/SATA/NVMe: 4 drives 3.5" SAS/SATA/NVMe: 4 drives
RB245	AMD Ryzen™ 7000 series	ASRock Rack® Server Board B650D4U	2U	22"	3.5" SAS/SATA: 8
RB251	Intel Xeon Scalable 3 rd Gen	Intel® Server Board M50FCP2SBSTD	2U	31"	3.5" SAS/SATA: 12 drives 2.5" SAS/SATA/NVMe: 24 drives

Chassis

Model	Type	Height	Depth	Motherboard Form Factor	Drive Bays (may require optional drive cages)	PCIe Slots	GPUs
DS25224	Edge Storage	2U	18"	N/A	2.5" SAS/SATA: 24 drives	N/A	-
RM251 GPU	GPU	2U	32"	SSI EEB	2.5" SAS/SATA: 8 drives Optional: 2.5" SAS/SATA/NVMe: 2 drives	PCIe Full Height: 3 OR PCIe Low Profile: 7	4
RM252	Edge	2U	35"	SSI EEB	2.5" SAS/SATA/NVMe: Using front I/O: 6 drives Using rear I/O: 4 drives	PCIe Full Height: 3	1
RM25324	Storage	2U	35"	ATX	3.5" SAS/SATA: 24 drives 2.5": 2 drives (optional)	PCIe Full Height: 3 OR Low Profile: 7	-
RM256 DC-MHS FLW DCC	DC MHS	2U	31"	Intel FLW Dual Socket	2.5" SAS/SATA/NVMe: 24 (up to 16 via E1.S)	PCIe FHFL: 6 PCIe FHHL: 2	3
RM352	Edge	3U	18"	SSI EEB	2.5" SAS/SATA/NVMe: 6 drives	PCIe Full Height: 8	3
RM42736	Storage	4U	26"	SSI EEB	3.5" SAS/SATA: 36 drives 2.5" SAS/SATA/NVMe: 2 drives	PCIe Full Height: 3 OR Low Profile: 7	-
SR113	Tower	4U on rack	27"	SSI EEB, other proprietary	3.5" SAS/SATA: 8 drives 2.5" SAS/SATA: 8 drives	PCIe Full Height: 11	5
SR115	Tower	4U on rack	23"	SSI EEB	3.5" SAS/SATA: 8 drives 2.5" SAS/SATA: 8 drives	PCIe Full Height: 8	2
SR115 Lcooling	Tower	4U on rack	28"	SSI EEB	3.5" SAS/SATA: 8 drives	PCIe Full Height: 8	4

SIMPLICITY FLEXIBILITY SCALABILITY

CHENBRO MICOM CO., LTD.

Tel: +886-2-8226-5500
E-mail: info@chenbro.com

CHENBRO MICOM (USA) INC.

Tel: +1-909-937-0100
E-mail: usinfo@chenbro.com

CHENBRO GmbH

Tel: +49-2154-8142730
E-mail: deinfo@chenbro.com

CHENBRO MICOM (BEIJING) CO., LTD.

Tel: +86-010-5327-7230
E-mail: cninfo@chenbro.com

CHENBRO MICOM (SHENZHEN) CO., LTD.

Tel: +86-755-23373870
E-mail: cninfo@chenbro.com

CHENBRO MICOM (SHANGHAI) CO., LTD.

Tel: +86-21-33232288
E-mail: cninfo@chenbro.com